

BELGRAVE HEIGHTS is calling again



The popular Convention Centre, only 28 miles east of Melbourne, with a beautiful setting of gum trees, bush and ornamental shrubs, has an area of over 20 acres. There are delightful walks through bush tracks and fern gullies to Mt. Morton nearby, whilst the Sherbrooke Forest, Emerald Lake and many other beauty spots of the Dandenongs are within easy reach by car or bus.

Many friends and associated organisations have their own premises in the area, and the large open-sided Auditorium accommodates almost 2000 visitors. At Belgrave Heights there are, therefore, ideal surroundings to enjoy a vacation which combines physical relaxation with spiritual enrichment.

the convention message

the same as that proclaimed annually at the well-known Keswick Convention, England, sets forth the offer in God's Word of a life of sustained fellowship with God, victory over sin, and power in service, through Christ as Saviour, Lord and Life; and of God's call to all, as missionary Christians to share these "glad tidings" with others to the uttermost part of the earth.

It stresses a moment-by-moment appropriation by faith of the very life of the Lord Jesus, made available through His death and resurrection and maintained in the believer by the indwelling and infilling of the Holy Spirit.

the spiritual ministry

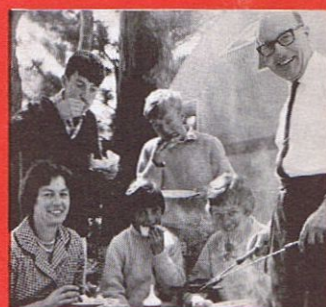
is paramount in our programme. Early morning Prayer Meetings are rich in fellowship. There are BIBLE READINGS at 11 a.m., and CONVENTION MESSAGES at 3 and 7 p.m. most days.

A SPECIAL PROGRAMME is provided for Sunday, December 31 (11 a.m., Worship Service; 3 p.m., Young People's Rally; 7 p.m., Evangelistic Meeting) and also for Missionary Day, Saturday, December 30.

heartly singing

of well-known Convention hymns selected from the Keswick Hymn-book will be a special feature of the gatherings. Song leader will be Mr. Frederic Levett.

accommodation



is arranged, where possible, for those desiring to stay in the district for the Convention, in furnished houses for families and larger parties; at guest houses and also in several large Youth Camps. There are kitchens on the grounds for large or small groups prepared for camping, and good camp sites, with well-equipped facilities including electricity supply, can be booked by those bringing their own caravans and tents.

day visitors

Day visitors to the Convention are most cordially invited. Boiling water is provided on the grounds for preparing picnic lunches, and cups of tea, and light refreshments can also be obtained at the Canteen. Evening meetings will end at 8.30 to enable visitors to return to the city in good time.

play centre



To enable mothers to attend morning and afternoon meetings with greater freedom, the young children will be cared for at the new Centre situated north of the Tea service area.

executive officers

Chairman:
Alfred E. Coombe

Vice-Chairmen:
Leonard E. Buck
J. H. McCracken, LL

Hon. Treasurer:
C. P. Ridley Kitchen

Hon. Asst. Treasurer:
C. G. Sandland

Secretary:
Arthur Pocklington

Also:
Rev. A. T. Stevens, B.D., Dip.R.E.
G. H. Wilson, B.A., A.R.I.B.A.

Assistant Secretary:
Miss Lois Weymouth

Office Address: C/o. K. Book Depot, 317 Collin Melbourne. Telephone 62 2777 (During Convention 75 2037).

The Treasurer invites the prayers and co-operation of Christian friends in meeting the heavy expenses of the Convention.

arty singing

Well-known Convention
ns selected from the
vick Hymn-book will
special feature of the
erings. Song leader
be Mr. Frederic Levett.

ommodation



anged, where possible,
hose desiring to stay
e district for the
vention, in furnished
es for families and
r parties; at guest
es and also in several
Youth Camps. There
itchens on the grounds
arge or small groups
ared for camping, and
camp sites, with
equipped facilities
ding electricity supply,
e booked by those
ing their own caravans
ents.

y visitors

visitors to the
vention are most
ally invited. Boiling
r is provided on the
nds for preparing
c lunches, and cups of
nd light refreshments
Also be obtained at
Canteen. Evening
ings will end at 8.30
able visitors to return
e city in good time.

play centre



To enable mothers to
attend morning and
afternoon meetings with
greater freedom, the very
young children will be
cared for at the new Play
Centre situated north of
the Tea service area.

executive officers

Chairman:

Alfred E. Coombe

Vice-Chairmen:

Leonard E. Buck

J. H. McCracken, LL.B.

Hon. Treasurer:

C. P. Ridley Kitchen

Hon. Asst. Treasurer:

C. G. Sandland

Secretary:

Arthur Pocklington

Also:

Rev. A. T. Stevens, B.A.,
B.D., Dip.R.E.

G. H. Wilson, B.A.,
A.R.I.B.A.

Assistant Secretary:

Miss Lois Weymouth

Office Address: C/o. Keswick
Book Depot, 317 Collins Street,
Melbourne. Telephone:
62 2777 (During Convention
75 2037).

The Treasurer invites the
prayers and co-operation of
Christian friends in meeting
the heavy expenses of
the Convention.

PROGRAMME

Early Morning Prayer Meetings in Small Hall 7. to 7.45 daily

Tuesday, December 26

7 a.m.
11 a.m.
3 p.m.
7 p.m.

Mr. A. E. Coombe
Rev. Dudley Foord
Dr. Alan Redpath
Rev. Dudley Foord

Wednesday, December 27

7 a.m.
11 a.m.
3 p.m.
7 p.m.

Mr. L. E. Buck
Rev. Dudley Foord
Dr. Alan Redpath
Rev. G. B. Duncan

Thursday, December 28

7 a.m.
11 a.m.
3 p.m.
7 p.m.

Rev. Dudley Foord
Rev. Dudley Foord
Rev. G. B. Duncan
Dr. Alan Redpath

Friday, December 29

7 a.m.
11 a.m.
3 p.m.
7 p.m.

Dr. Alan Redpath
Rev. Dudley Foord
Ladies Meeting
Rev. G. B. Duncan

Saturday, December 30

7 a.m.
11 a.m.

3 p.m.
7 p.m.

Rev. G. B. Duncan
Melbourne Bible Institute
Missionary Speakers
Dr. Alan Redpath
Missionary Speakers
(1) Missionary Offering
(2) Rev. G. B. Duncan

Sunday, December 31

7 a.m.
11 a.m.

3 p.m.
7 p.m.

Rev. G. H. Morling
Dr. Alan Redpath (concluding
with United Communion Service)
Youth Meeting and
Rev. G. B. Duncan
Rev. John G. Ridley

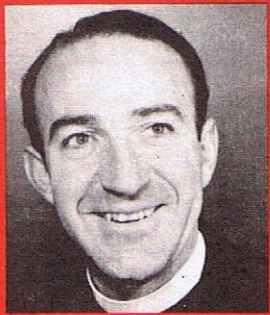
Monday, January 1

7 a.m.
11 a.m.
3 p.m.

7 p.m.

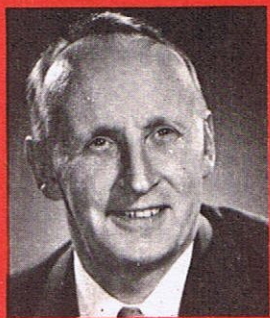
Rev. G. B. Duncan
Rev. Dudley Foord
Jubilee Thanksgiving —
(1) Rev. G. H. Morling
(2) Rev. G. B. Duncan
Dr. Alan Redpath

hear these gifted speakers



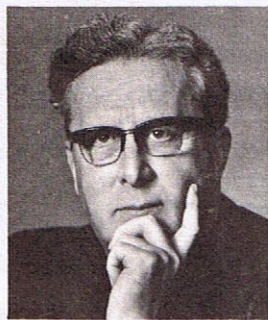
Rev. Dudley Foord, M.Sc., B.D., Th.L.

Dean of Students at Moore Theological College, Sydney, whose ministry was much appreciated by both young and old at the 1966 Easter Convention. He is a gifted Bible teacher with wide experience in Pastoral and Missionary spheres and has been greatly used in specialized work among University students.



Rev. Alan Redpath, D.D.

Until recently the Minister of Charlotte Chapel, Edinburgh, is a gifted exponent of the Convention message and has frequently spoken at Keswick in England. For nine years he was Pastor of Moody Memorial Church, Chicago, and during this time commenced the mid-America "Keswick".



Rev. George B. Duncan, M.A.

Minister of St. George's, Tron, Glasgow, who for many years has been one of the leading speakers at the English Keswick. His clear and forthright messages at Belgrave Heights in 1957 are still gratefully remembered and he will be warmly welcomed for this, his second visit.

The Jubilee Programme will also include two well-known speakers of many former Conventions:

Rev. G. H. Morling, M.A., Principal-emeritus of the N.S.W. Baptist College, and Rev. John G. Ridley, M.C., the veteran Australian evangelist.

children & young teenagers meetings

will be held daily in the Small Hall, under the well-known red and white banner of the Children's Special Service Mission. With Rev. Norman Lacy, Th.L. leading the team, a complete C.S.S.M. programme including Treasure Seekers, classes, games, competitions, and special afternoon rallies on all holidays and the Sunday will be provided. Morning meetings, at 11 a.m., will commence on December 26.

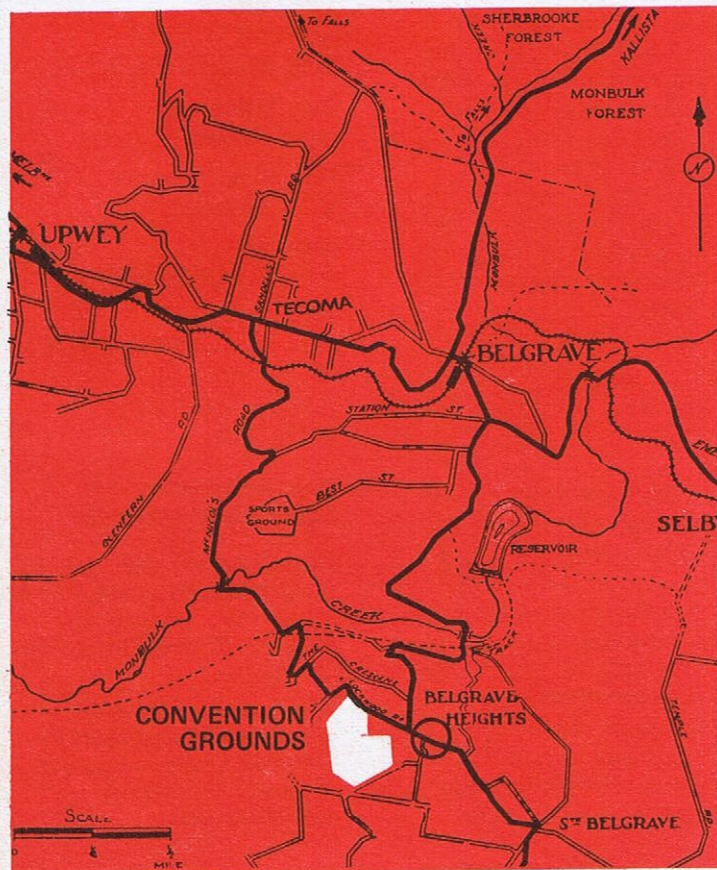
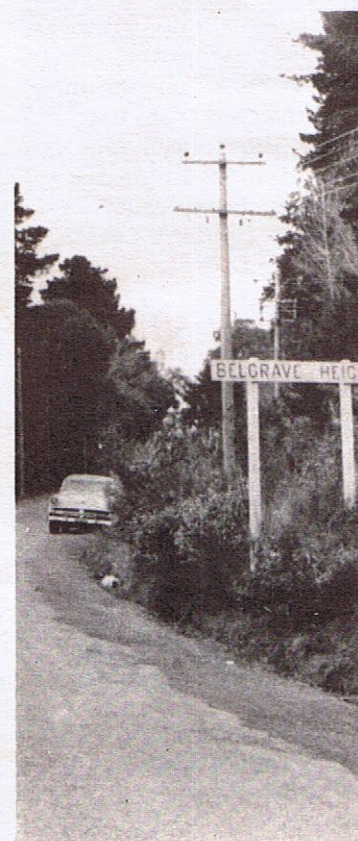
A 'Conquest Club' with bible studies for young Teenagers will be conducted separately in a Marquee in the pine grove just north of the Car Park.

travel directions

TRAIN from Flinders Street Station to Belgrave, thence by bus or taxi to Belgrave Heights.

MOTORISTS take main roads to Belgrave, turn right across bridge over railway and signposts then lead clearly to Belgrave Heights, 2½ miles beyond. An alternate route is to turn right into McNichol Road, at Tecoma, and arrow signs lead to Belgrave Heights, two miles ahead. From Southern Suburbs take Wellington Road and turn left at Belgrave Road.

SPECIAL BUSES will leave Keswick Book Depot, 317 Collins Street, at 9.30 a.m. on three main days (December 26 and 30 and on January 1), and will return direct to the city immediately after the afternoon meeting. The return fare is \$1.20. Early bookings essential at Convention Office, 62 2777.

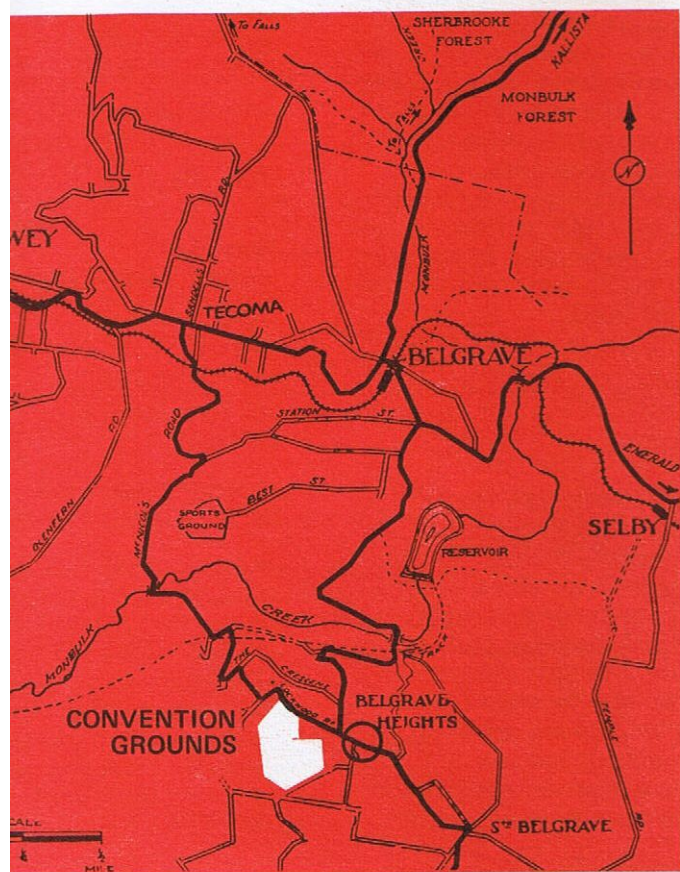


el ctions

l from Flinders Street
to Belgrave, thence by
taxi to Belgrave Heights.

RISTS take main roads
rave, turn right across
over railway and
ts then lead clearly to
e Heights, 2½ miles
l. An alternate route is
right into McNichol
at Tecoma, and arrow
ad to Belgrave Heights,
les ahead. From
rn Suburbs take
ton Road and turn left
rave Road.

AL BUSES will leave
k Book Depot, 317
Street, at 9.30 a.m. on
main days (December 26
and on January 1), and
urn direct to the city
iately after the afternoon
g. The return fare is
Early bookings essential
vention Office,
7.



VICTOR PUBLISHING 459 1122

all one in Christ Jesus

Belgrave Heights
JUBILEE
CONVENTION
Dec. 26 to Jan. 1, '68

