

# Ideal for Recreation

The popular Convention Centre, only 28 miles east of Melbourne, with a beautiful setting of gum trees, bush and ornamental shrubs, has an area of over 20 acres. There are delightful walks through bush tracks and fern gullies to Mt. Morton nearby, whilst the Sherbrooke Forest, Emerald Lake, and many other beauty spots of the Dandenongs are within easy reach by car or bus.

Many friends and associated organisations now have their own premises in the area, and the large open-sided Auditorium accommodates almost 2000 visitors. At Belgrave Heights there are, therefore, ideal surroundings to enjoy a vacation which combines physical relaxation with spiritual enrichment.

## Rev. John R. Reid, B.A., Th.L.

For several years Travelling Secretary of the Intervarsity Fellowship, is now Rector of Christchurch, Gladesville, N.S.W. During this, his first visit to Belgrave Heights, he will give the morning Bible Readings.



## Children's Meetings

will be held daily in the Small Hall, under the well-known red and white banner of the Children's Special Service Mission. These will feature a complete C.S.S.M. programme, including treasure seekers, classes, games, competitions and special afternoon rallies (both Sundays and holidays). Morning sessions, at 11, will commence on Boxing Day.

Leader: Mr. Ray Averill.

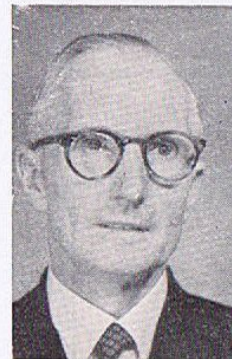


# Hear These Gifted Speakers



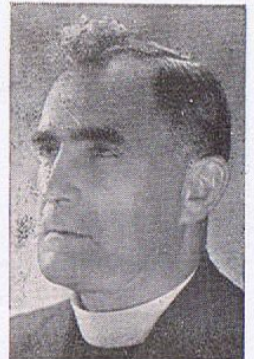
## Rev. A. Skevington Wood, B.A., Ph.D.

A Methodist Minister from Great Britain, at present serving with the Movement for World Evangelization, who has been greatly used in widespread Bible Teaching and Convention ministry. He was an acceptable speaker at Keswick (England) in 1962 and 1964, and as an author his books and articles have made a deep impression.



## Rev. J. W. Searle, B.A., B.D.

The former Principal of the Melbourne Bible Institute is widely known for his practical teaching ministry which has brought spiritual enrichment to many.

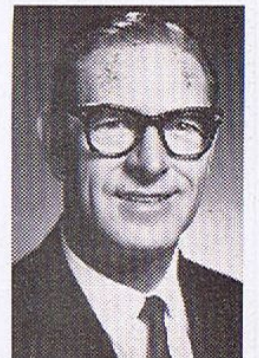


## Rev. G. H. Morling, O.B.E., M.A.

Principal-emeritus of the N.S.W. Baptist College and the President-General of the Baptist Union of Australia, is one of Australia's best-known Bible teachers and Convention speakers.

## Mr. Leonard E. Buck

The well-known Vice-Chairman of the Convention and General Director of the Unevangelized Fields Mission. He returned recently from an extensive overseas tour which included visits to Keswick Convention (England) and several Mission fields.





is paramount in our programme. Early morning Prayer Meetings are rich in fellowship. There are BIBLE READINGS at 11 a.m., and CONVENTION MESSAGES at 7 p.m. each day, with Afternoon Meetings at 3 o'clock on all except two days. SPECIAL PROGRAMMES are provided for the two Sundays, December 27 and January 3 (11 a.m., Worship Service; 3 p.m., Young People's Rally; 7 p.m., Evangelistic Meeting) and also for Missionary Day, Saturday, January 2.

Separate Morning Bible Studies for Early Teenagers will be conducted in a Marquee located in a pine grove just north of the Car Park.

### Joyful Singing

of well-known Convention hymns selected from the Keswick Hymn-book will be a special feature of the gatherings. Song leader will be Mr. Frederic Levett.



### Accommodation

is arranged, where possible, for those desiring to stay in the district for the Convention, in furnished houses for families and larger parties; at guest houses and also in several large Youth Camps. There are kitchens on the grounds for large or small groups prepared for camping, and good camp sites, with well-equipped facilities, can be booked by those bringing their own caravans and tents. Electricity supply for caravans can be reserved.

### Day Visitors

Day visitors to the Convention are most cordially invited. Boiling water is provided on the grounds for preparing picnic lunches, and cups of tea, and light refreshments can also be obtained at the Canteen. The evening meetings will end at 8.30 to enable visitors to return to the city in good time.



### Play Centre

To enable mothers to attend morning and afternoon meetings with greater freedom, the very young children will be cared for at the new Play Centre situated north of the Tea service area.

Acknowledgments for photos. used herein to "The Age," A. W. Wilson and Owen Cumming.

### Wednesday, December 30 —

11 a.m.	Rev. JOHN R. REID
3 p.m.	LADIES' MEETING
7 p.m.	Rev. G. H. MORLING

### Thursday, December 31 —

11 a.m.	Rev. JOHN R. REID
7 p.m.	Dr. A. SKEVINGTON WOOD

### Friday, January 1 —

11 a.m.	Rev. JOHN R. REID
3 p.m.	Dr. A. SKEVINGTON WOOD
7 p.m.	Rev. G. H. MORLING

### Saturday, January 2 —

11 a.m.	MELBOURNE BIBLE INSTITUTE MISSIONARY SPEAKERS Rev. G. H. MORLING
3 p.m.	MISSIONARY SPEAKERS
7 p.m.	(1) MISSIONARY OFFERING (2) Dr. A. SKEVINGTON WOOD

### Sunday, January 3 —

11 a.m.	Rev. G. H. MORLING (concluding with United Communion Service)
3 p.m.	YOUTH MEETING and Dr. A. SKEVINGTON WOOD.
7 p.m.	Dr. A. SKEVINGTON WOOD

### EXECUTIVE OFFICERS

Chairman: ALFRED E. COOMBE  
Vice-Chairmen: LEONARD E. BUCK  
J. H. McCracken, LL.B.  
Hon. Treasurer: C. P. RIDLEY KITCHEN  
Hon. Asst. Treasurer: C. G. SANDLAND  
Secretary: ARTHUR POCKLINGTON  
Also Rev. A. T. STEVENS, B.A., B.D., Dip.R.E.

Assistant Secretary: Miss LOIS WEYMOUTH

Office Address: C/o. Keswick Book Depot, 315 Collins Street, Melbourne  
Telephone: 62-2777

The Treasurer invites the prayers and co-operation of Christian friends in meeting the heavy expenses of the Convention





# HOLIDAY TIME AT BELGRAVE HEIGHTS



## The Convention Message

This is the same as that proclaimed annually at Keswick. Dr. W. Graham Scroggie, one of the ablest exponents of the message, sums up the teaching thus:

"All Christians have what the New Testament calls 'eternal life', for without this one cannot be a Christian, but all Christians have not entered into the experience of the abounding life.

"There can be relationship without fellowship; . . . union without communion; . . . life without health. . . . One may war and yet not win, may serve and yet not succeed, may try and yet not triumph, and the difference throughout is just the difference between the possession of eternal life, and the experience of abounding life.

"Abounding life is just the fullness of life in Christ, made possible by His death and resurrection, and made actual by the indwelling and infilling of the Holy Spirit."

## *The Spiritual Ministry . . . .*

is paramount in our programme. Early morning Prayer Meetings are rich in fellowship. There are BIBLE READINGS at 11 a.m., and CONVENTION MESSAGES at 7 p.m. each day, with Afternoon Meetings at 3 o'clock on all except two days. SPECIAL PROGRAMMES are provided for the two Sundays, December 27 and January 3 (11 a.m., Worship Service; 3 p.m., Young People's Rally; 7 p.m., Evangelistic Meeting) and also for Missionary Day, Saturday, January 2.

## THE PROGRAMME

Early Morning Prayer Meetings in Small Hall, 7 to 7.45 daily

### Friday, December 25 —

7 p.m. Dr. A. SKEVINGTON WOOD

### Saturday, December 26 —

11 a.m. Rev. JOHN R. REID  
3 p.m. Rev. J. W. SEARLE  
7 p.m. Dr. A. SKEVINGTON WOOD

### Sunday, December 27 —

11 a.m. Rev. J. W. SEARLE  
3 p.m. YOUTH MEETING and  
Rev. JOHN R. REID  
7 p.m. Dr. A. SKEVINGTON WOOD

### Monday, December 28 —

11 a.m. Rev. JOHN R. REID  
3 p.m. Mr. LEONARD E. BUCK  
7 p.m. Dr. A. SKEVINGTON WOOD

### Tuesday, December 29 —

11 a.m. Rev. JOHN R. REID  
7 p.m. Dr. A. SKEVINGTON WOOD

### Wednesday, December 30 —

11 a.m. Rev. JOHN R. REID  
3 p.m. LADIES' MEETING  
7 p.m. Rev. G. H. MORLING

### Thursday, December 31 —

11 a.m. Rev. JOHN R. REID  
7 p.m. Dr. A. SKEVINGTON WOOD

### Friday, January 1 —

11 a.m. Rev. JOHN R. REID

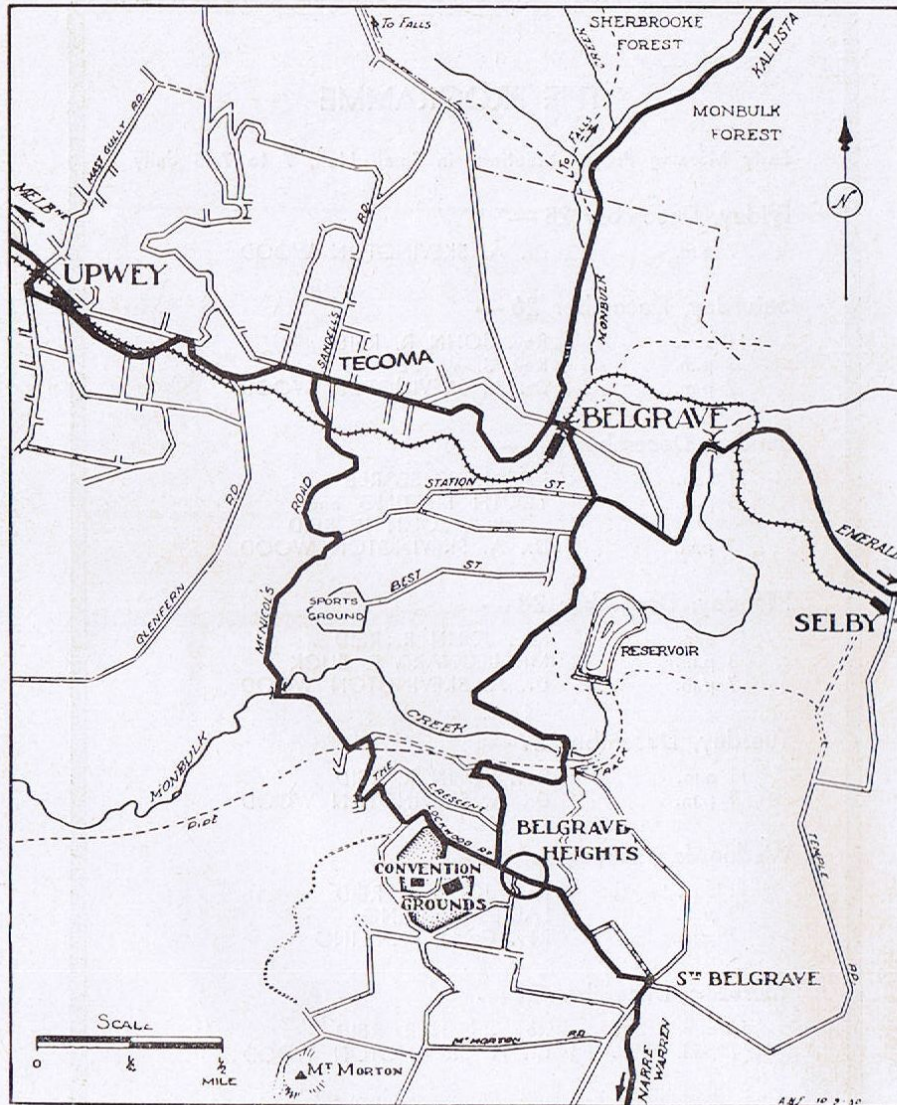


## Travel Directions

**TRAIN** from Flinders Street Station to Belgrave, thence by Bus to Belgrave Heights.

**MOTORISTS** take main roads to Belgrave, turn right across bridge over railway, and signposts then lead clearly to Belgrave Heights, 2½ miles beyond. An alternative route is to turn right into McNicol Road, at Tecoma, and arrow signs lead to Belgrave Heights, two miles ahead. From Southern Suburbs take Wellington Road and turn left at Belgrave Road.

**SPECIAL BUSES** will also run direct from the city right to the Convention on four main days (December 26 and 28, and January 1 and 2). The day return fare is 10/-, and bookings should be made early at the Convention Office, 62-2777.



FRASER & MORPHET PTY. LTD., PRAHRAN



*"All One in  
Christ  
Jesus"*

**47th ANNUAL**

# BELGRAVE HEIGHTS CONVENTION

An Australian "KESWICK" or  
Victorious Life Convention  
where members of all branches  
of the Christian Church spend  
the holiday season in fellow-  
ship over the Word of God.

*25th DECEMBER,  
1964 - to...  
3rd JANUARY,  
1965*