

YOU'LL ENJOY THESE SPEAKERS



Rev. George B. Duncan, M.A.,

Vicar of Christ Church, Cockfosters, London, is a gifted exponent of the Convention message, and a regular speaker each year at Keswick (Eng.). His ministry at Belgrave Heights will be eagerly anticipated.

Principal G. H. Morling, M.A.,

Head of the Baptist Theological College, N.S.W., is one of Australia's best known Bible teachers and Convention speakers.



Rev. Allan L. Burrow, B.Sc.,

Principal of the Adelaide Bible Institute and minister of Parkside Baptist Church, S.A., is a bright speaker with a special appeal to youth.



Rev. H. H. E. Knight, B.Sc.,

is the Home Director of the China Inland Mission and a member of the Convention Council.

Mr. Trevor M. Morris,

Well known Mildmay Evangelist, who recently returned from overseas campaigns, has spoken at Convention gatherings in many countries.



Rev. Akira Hatori, M.A., B.D.,

One of Japan's leading evangelists, will be warmly welcomed at Belgrave Heights this year. He is Assistant Director of the Central Japan Bible School, and widely known through regular radio and Convention ministry.

Rev. J. W. Searle, B.A., B.D.,

Principal of the Melbourne Bible Institute, is well known for his practical teaching ministry. He will give a series of morning Bible Readings.

Dr. S. Barton Babbage, M.A., Ph.D., Th.D.,

Dean of Melbourne and Principal of Ridley College, will speak at the Convention for the first time.

Mr. Norman R. Burns,

who recently returned after 26 years' missionary service in India with the Dohnavur Fellowship, was one of the early leaders of the Crusader and Evangelical Unions when a student at the Melbourne University.

Rev. W. J. JOHNSON, B.A., the Secretary of the Methodist Home Missions in Victoria, will also speak.



10.30—Bible Readings.

11.30—Convention Messages.

Afternoon Meetings (on seven days), at 3—

Boxing Day (Dec. 26), Saturday, Dec. 28; Sundays, Dec. 29 and Jan. 5);
New Year's Day (Jan. 1); Ladies' Meeting (Jan. 2), and Missionary Day
(Jan. 4).

Evening Meetings—

7—Convention Messages.

Special Programme on Sundays—

10.30 a.m.—Worship Service.

3 p.m.—Young People's Rally.

7 p.m.—Evangelistic Meeting.

Convention Hymns

selected from the Keswick Hymn Book are provided for visitors. The complete Hymn Book, together with music, can be obtained, if desired, at the bookstall on the Grounds. All the main meetings will be preceded by fifteen minutes of bright singing under the leadership of **Mr. John Waller**.

Accommodation

will be arranged, where possible, for those desiring to stay in the district for the Convention, in furnished houses for families and larger parties; at boarding houses, and also in several large Youth Camps. Kitchens for large or small groups prepared for camping are available on the Convention grounds, and there are good camp sites for those bringing their own caravans and tents.

Day Visitors

to the Convention are most cordially invited. Tea or hot water is provided on the grounds for preparing picnic lunch or tea. Meals can also be obtained at a cafe in the township at a reasonable charge. The evening meetings will end at 8.30 to allow visitors to return to the city in good time.

Creche

To enable mothers to attend morning and afternoon meetings with greater freedom, the very young children will be cared for at a Creche, situated in a shady spot on the west side of the Car Park.

CHILDREN'S MEETINGS

will be held daily in the Small Hall, under the well-known red and white banner of the Children's Special Service Mission. With **Mr. Ken Orr** leading the team, a complete C.S.S.M. programme, including Keenite classes, games, competitions, and special activities for early 'Teen-agers will be provided. Morning sessions will commence at 10 o'clock.

10.30 a.m. (1) Rev. J. W. SEARLE
(2) Rev. A. L. BURROW

7 p.m. Principal G. H. MORLING

Wednesday, January 1—

Offering for Expenses

10.30 a.m. (1) Principal G. H. MORLING
(2) Rev. A. L. BURROW

3 p.m. Rev. A. HATORI

7 p.m. Rev. GEORGE DUNCAN

Thursday, January 2—

10.30 a.m. (1) Principal G. H. MORLING
(2) Rev. H. H. E. KNIGHT

3 p.m. LADIES' MEETING

7 p.m. Rev. A. HATORI

Friday, January 3—

10.30 a.m. Principal G. H. MORLING

7 p.m. Rev. GEORGE DUNCAN

Saturday, January 4—Missionary Day—

10.30 a.m. MELBOURNE BIBLE INSTITUTE MEETING AND
Rev. A. L. BURROW

3 p.m. MISSIONARY SPEAKERS and Rev. A. HATORI

7 p.m. (1) MISSIONARY OFFERING

(2) Rev. GEORGE DUNCAN

Sunday, January 5—

11 a.m. Rev. GEORGE DUNCAN (concluding with
United Communion Service)

3 p.m. YOUTH MEETING and Mr. NORMAN BURNS

7 p.m. Rev. A. L. BURROW

EXECUTIVE OFFICERS

Chairman: ALFRED E. COOMBE

Vice-Chairmen: LEONARD E. BUCK
J. H. McCracken, LL.B.

Hon. Treasurer: C. P. R. KITCHEN

Hon. Asst. Treasurer: L. E. TOPP

Secretary: ARTHUR POCKLINGTON

ARCHDEACON KIDNER, Th.L., and C. G. SANDLAND

Assistant Secretary: Miss LOIS WEYMOUTH.

Office Address: C/o Keswick Book Depot, 315 Collins Street, Melbourne.
Telephone: MB 2777.

The Treasurer invites the prayers and co-operation of Christian friends in meeting the heavy expenses of the Convention.

"All One in Christ Jesus"

A VACATION TO REMEMBER

The Convention Grounds

at Belgrave Heights, 28 miles east of Melbourne, with a beautiful setting of gum trees, bush and ornamental shrubs, has an area of over 20 acres. There are delightful walks through bush tracks and fern gullies to Mt. Morton near by, whilst the Sherbrooke Forest, Emerald Lake, and many other beauty spots of the Dandenongs are within easy reach by car or bus.

Many friends and associated organisations now have their own premises in the vicinity of this popular Convention Centre, and the large open-sided Auditorium has been extended this year to accommodate almost 2000 visitors. At Belgrave Heights there are therefore ideal surroundings to enjoy a vacation which combines physical relaxation with spiritual enrichment.

The Convention Message

the same as that proclaimed annually at the well-known Keswick Convention, has been the means of releasing untold numbers from the bondage of self and sin into the liberty of the Spirit-filled life.

It is a message of victory; victory complete and constant; victory over all the power of the enemy; victory all along the line.

The message brings to Christians a revelation and a challenge—a revelation concerning the soul's need and the wealth of spiritual inheritance available in Christ—and a challenge to enter by faith into possession of this heritage in order to be fitted for Christ's service.

Programme Features

Morning Meetings—

10.30—Bible Readings.

11.30—Convention Messages.

Afternoon Meetings (on seven days), at 3—

Boxing Day (Dec. 26), Saturday, Dec. 28; Sundays, Dec. 29 and Jan. 5);

New Year's Day (Jan. 1); Ladies' Meeting (Jan. 2), and Missionary Day (Jan. 4).

Evening Meetings—

7—Convention Messages.

THE PROGRAMME

Early Morning Prayer Meetings in Small Hall, 7 to 7.45 daily.

Wednesday, December 25—

7 p.m. Mr. NORMAN BURNS.

Thursday, December 26—

10.30 a.m. (1) Rev. J. W. SEARLE
(2) Dr. S. BARTON BABBAGE

3 p.m. Mr. NORMAN BURNS

7 p.m. Rev. GEORGE DUNCAN

Friday, December 27—

10.30 a.m. (1) Rev. J. W. SEARLE
(2) Rev. H. H. E. KNIGHT

7 p.m. Mr. TREVOR M. MORRIS

Saturday, December 28—

Offering for Expenses

10.30 a.m. (1) Rev. J. W. SEARLE
(2) Rev. W. J. JOHNSON

3 p.m. Rev. A. L. BURROW

7 p.m. Rev. GEORGE DUNCAN

Sunday, December 29—

10.30 a.m. Dr. S. BARTON BABBAGE

3 p.m. YOUTH MEETING and Rev. GEORGE DUNCAN

7 p.m. Mr. TREVOR M. MORRIS

Monday, December 30—

10.30 a.m. (1) Rev. J. W. SEARLE
(2) Rev. GEORGE DUNCAN

7 p.m. Rev. AKIRA HATORI

Tuesday, December 31—

10.30 a.m. (1) Rev. J. W. SEARLE
(2) Rev. A. L. BURROW

7 p.m. Principal G. H. MORLING

Wednesday, January 1—

Offering for Expenses

10.30 a.m. (1) Principal G. H. MORLING
(2) Rev. A. L. BURROW

3 p.m. Rev. A. HATORI

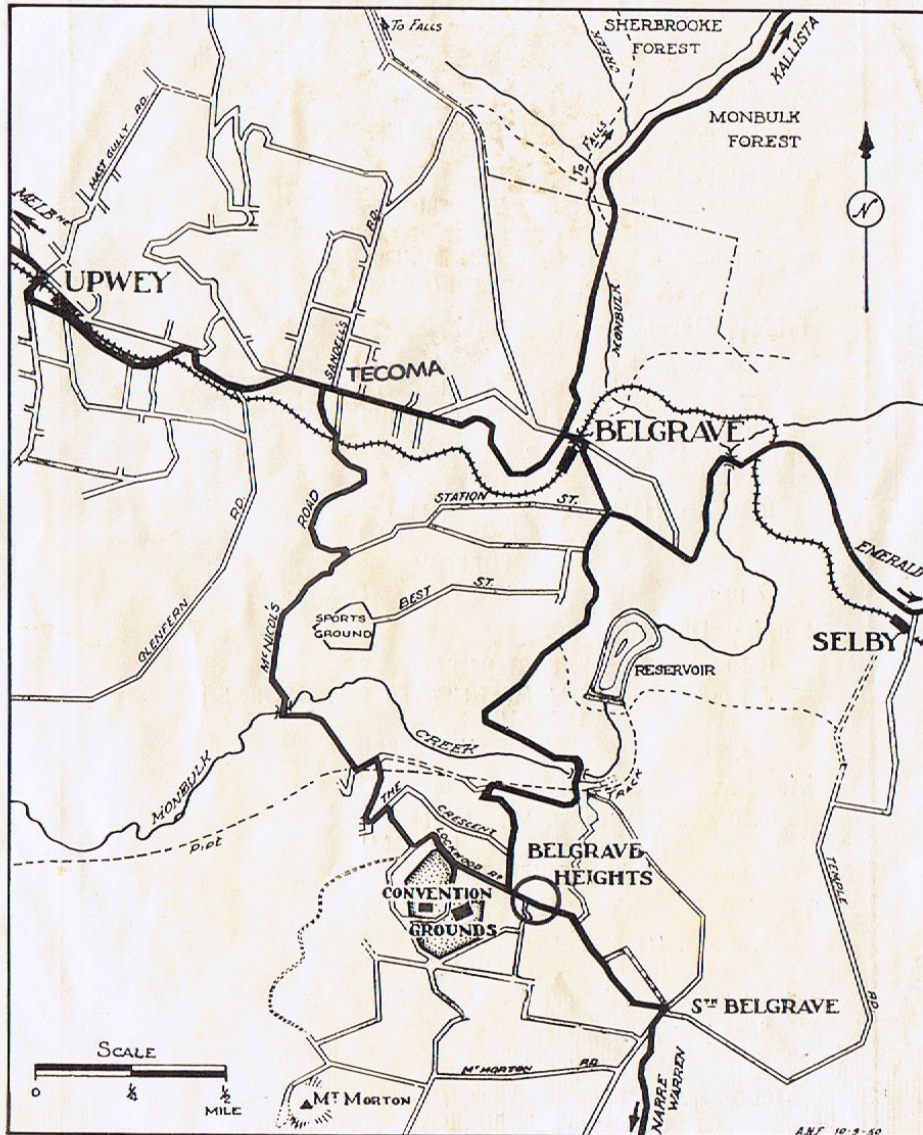
7 p.m. Rev. GEORGE DUNCAN

Travel Directions

TRAIN from Flinders Street Station to Fern Tree Gully, thence by Bus to Belgrave Heights. Buses leave after all evening meetings.

MOTORISTS take main roads to Belgrave, turn right across bridge over railway, and signposts then lead clearly to Belgrave Heights, $2\frac{1}{2}$ miles beyond. An alternative route is to turn right into McNicol Road at Tecoma, and arrow signs lead to Belgrave Heights, two miles ahead.

SPECIAL BUSES will also run direct from the city right to the Convention on three main days (Dec. 26 and Jan. 1 and 4). The day return fare is 10/-, and bookings should be made early at the Convention Office, MB 2777.



Spectator Publishing Co., Printers, 134a Little Collins St., Melbourne.

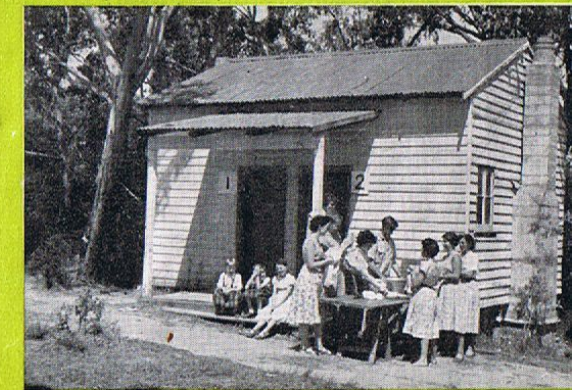
ANNUAL 40th BELGRAVE HEIGHTS CONVENTION

DEC. 25 - JAN. 5, 1958



This Australian "KESWICK" or Victorious Life Convention attracts enthusiastic crowds.

Camps for Young People on the Grounds or near by are always a popular feature.



Members of all branches of the Christian Church enjoy rich fellowship during the holiday season.