

MEETINGS.

The Convention meetings are held in a large marquee on the Convention ground, adjoining the Upwey Union Church, and will begin on Christmas Eve with a Prayer Meeting at 8 o'clock.

EARLY MORNING PRAYER MEETINGS.—There will be early prayer meetings every morning at 7 o'clock, including Sundays, commencing on Christmas morning.



MORNING BIBLE READINGS will be held each day (Sundays excepted), at 10.45 a.m.

AFTERNOON OR EVENING CONVENTION MEETINGS will be held daily, according to a programme to be issued early in December.

OTHER MEETINGS.—There will also (D.V.) be important Missionary meetings, special gatherings for Children, and the "Annual Upwey meeting" of the Melbourne Bible Institute.

Hymn Books.

Consecration and Faith Hymn Books are used, and can be obtained at Book Room.

TRANSPORT.

RAILWAY SERVICE.—There is a splendid railway service, with change at Upper Ferntree Gully. **Holiday Excursion Fares:** First return, 4/2; second return, 3/3. **Day Single:** First, 2/6; second, 1/11. Many trains run to Upper Ferntree Gully only, and these can be used with the aid of a motorbus from the Gully Station to Upwey; motorbus fare, 1/-.

MOTOR SERVICE.—Besides the train service there is now the fast Melbourne-Belgrave Motor Service, with a time table running from 9 a.m. till 11.15 p.m. daily. These motors, which pass through Upwey, take about an hour for the journey; fare, single 3/-, return 5/-.

ACCOMMODATION.

FURNISHED HOUSES.—For the most part the friends gathering at Upwey reside in furnished houses, which have to be taken for a fortnight at least. Those forming a house party generally divide the work and expense amongst themselves, and find this a most economical way of spending the holiday. The cost varies according to the household management and general arrangements, but usually runs somewhere about 30/- per week, for the fortnight. It is necessary for all accommodated in furnished houses to bring their own linen (bed and table) and cutlery, also a good rug.

BOARDING HOUSES.—Arrangements are also made with the local boarding houses at charges from £2/2/- to £3/3/- per week. One or two private boarding houses are also arranged for by the Convention Committee, where the charges are generally 45/- to 50/- per week.

YOUNG MEN'S CAMP.—A Canvas Camp for young men is also provided, on ground specially purchased by the Convention Council in Collier Avenue, immediately facing the Church. Application for beds should be made early, but any having their own camp equipment can be accommodated at the last moment. The charge for use of camp stretcher, meals, etc., will be 25/- per week, or 4/6 per day. In every case the camper must supply his own bedding and cutlery.

DAY VISITORS

to the Convention are most cordially invited. The train service allows for a whole day or a long half-day being spent in fellowship in some of the meetings. Hot water will be provided for those who desire a picnic lunch, or meals at some of the private or boarding houses can be obtained.

UPWEY CONVENTION COUNCIL.

Mr. G. L. Aitken, Rev. S. Beckingham, Mr. Herbert Clarke, Dr. Northcote Deck, Messrs. H. B. Denniston, T. Graham, J. M. Griffiths, Rev. R. A. Green, B.A., Mr. A. Kenny, Dr. J. J. Kitchen, Rev. Robert Kelly, Mr. Norman Lumsden, Dr. D. S. MacColl, Rev. C. H. Nash, M.A., Mr. E. Lee Neil, C.B.E., Messrs. D. E. Renshaw, W. Rogers, Rev. J. Campbell Robinson, Mr. C. A. Sandland, Revs. A. D. Shaw, W. T. C. Storrs, M.A., Pastor J. E. Thomas, Mr. Frank Varley.

LADIES' COMMITTEE.

Mrs. S. Beckingham, Miss I. Button, Mrs. W. T. Lawson, Mrs. H. P. Smith, Mrs. W. L. Wright, Miss F. Townsend.

Chairman for 1927-28 Convention: Mr. W. L. WRIGHT.

Hon. Secretary: Mr. H. P. SMITH.

Hon. Treasurer: Mr. W. L. WRIGHT.



The Convention Cottage, showing store room, which is used as a dining-room for the Young Men's Camp.

THE TREASURER

invites the prayers and co-operation of the Lord's people in meeting the expenses of the Convention.

APPLICATIONS FOR ACCOMMODATION

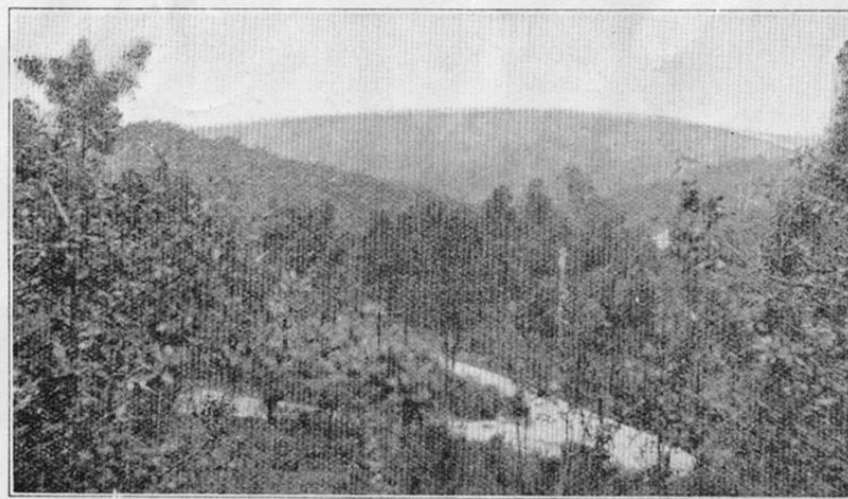
and any information desired should be made as early as possible to the Hon. Secretary.

KESWICK TEA AND BOOK ROOMS,
315 Collins Street, Melbourne.

Alpha Printing Co., 71-73 Hardware St., Melb.

UPWEY CONVENTION

CHRISTMAS & NEW YEAR, 1927-28



Mountain and Bush—Upwey.

The **TENTH ANNUAL UPWEY CONVENTION** will be held at Upwey, from Christmas Eve, December 24th, 1927, till Tuesday, January 3rd, 1928. The Convention is an Australian "KESWICK," or Victorious Life Convention, and Christians of all denominations, or of no denomination, are cordially invited to spend the holiday season in blessed fellowship over the Word of God.

SITUATION.

UPWEY is situated 24 miles from Melbourne, and is the first station on the narrow gauge line from Upper Ferntree Gully to Gembrook. It is a pretty township, a mile and a half from Ferntree Gully, nestling at the foot of the Dandenongs, and has delightful walks, together with opportunities for splendid mountain climbing for the young people.

UPWEY CONVENTION, 1927-28.

SPEAKERS

On the chief Public Holidays will (D V.) be as follows:

Monday, 26th December, 10.45 a.m. Bible Reading: Rev. C. H. Nash, M.A.
3 p.m. Rev. J. W. Kemp and Pastor Mallis.
Tuesday, 27th December, 10.45 a.m. Bible Reading: Rev. C. H. Nash, M.A.
3 p.m. Pastor Mallis and Rev. J. W. Kemp.
Monday, 2nd January, 10.45 a.m. Bible Reading; Pastor Mallis.
3 p.m. Rev. J. W. Kemp.
8 p.m. Testimony Meeting.

SUNDAY SERVICES:

25th Dec.	In the Marquee	11 a.m.	Pastor Mallis, Rev. S. Beckingham.
		3 p.m.	Children's Meeting.
		7.30 p.m.	Rev. J. W. Kemp.
	Church of England	11 a.m.	Rev. C. H. Nash, M.A.
		7.30 p.m.	Rev. W. P. Bainbridge.
1st Jan.	In the Marquee	11 a.m.	Pastor Mallis.
		3 p.m.	Young People's Meeting.
		7.30 p.m.	Rev. J. W. Kemp.
	Church of England	11 a.m.	Rev. R. C. M. Long.
		7.30 p.m.	

FOR OTHER MEETINGS

The Speakers will be announced from day to day. The Annual Missionary Picnic and Afternoon Meeting will be held by kind permission in Mr. Nicholls paddock, on Thursday, 29th December. The Annual Melbourne Bible Institute Upwey Meeting will be held on Friday Afternoon, 30th December. The Principal Missionary Meeting will be held in the Marquee, on Saturday Evening, 31st December.

— OPEN-AIR GOSPEL PREACHING DAILY —

UPWEY CONVENTION, 1927-28.

Visitors to Upwey, Belgrave and District are most cordially invited to be present at the Meetings.

Melbourne residents will find there is an ample train service to enable them to take day trips to the Convention, also the Belgrave-Melbourne Motors pass through Upwey, and afford comfortable and quick transit.

HOT WATER provided for Day Visitors.

On the Xmas Day, Boxing Day and New Year Holidays, Tea will be provided at the Marquee. Bring Provisions.

Bring Hymns of Consecration & Faith. (New Books obtainable at Bookstall.)

Mr. A. Morgan will be in charge of Piano.

Mr. C. H. Dyer will lead the singing.

Hon. Sec. of Ladies Committee:

Mrs. LAWSON.

Hon. Treasurer: Mr. A. KENNY.

H. P. SMITH, Hon. Sec.,
Keswick Rooms 315 Collins St.

"All One in Christ Jesus."

UPWEY CONVENTION

Xmas and New Year, 1927-28.

Meetings will be held Daily from
**Saturday, 24th December, to
Tuesday, 3rd January.**

in the Marquee on the Convention
Grounds adjoining the
Upwey Union Church.

And will include:

Early Morning Prayer Meetings
Daily at 7 a.m.

Bible Reading Meetings
on Week Days at 10.45 a.m.

Afternoon or Evening Convention Meetings and Missionary and Other Special Meetings. Special Sunday Services will be held in the Marquee, in the Upwey Church of England and in the Belgrave Union Church.

Chairman of Convention:
Mr. W. L. WRIGHT.