

MEETINGS.

The Convention meetings are held in a large marquee on the Convention ground, adjoining the Upwey Union Church, and will begin on Christmas Eve with a Prayer Meeting at 8 o'clock.

EARLY MORNING PRAYER MEETINGS.—There will be early prayer meetings every morning at 7 o'clock, including Sundays, commencing on Christmas morning.



MORNING BIBLE READINGS will be held each day (Sundays excepted), at 10.45 a.m.

AFTERNOON OR EVENING CONVENTION MEETINGS will be held daily, according to a programme to be issued early in December.

OTHER MEETINGS.—There will also (D.V.) be important Missionary meetings, special gatherings for Children, and the "Annual Upwey meeting" of the Melbourne Bible Institute.

TRANSPORT.

RAILWAY SERVICE.—There is a splendid railway service, with change at Upper Ferntree Gully. **Holiday Excursion Fares:** First return, 4/2; second return, 3/3. **Day Single:** First, 2/7; second, 1/10. Many trains run to Upper Ferntree Gully only, and these can be used with the aid of a motorbus from the Gully Station to Upwey; motorbus fare, 1/-.

MOTOR SERVICE.—Besides the railway service there is now the fast Melbourne-Belgrave Motor Service, with a time table running from 9 a.m. till 11.15 p.m. daily. These motors, which pass through Upwey, take about an hour for the journey; fare, single 3/-, return 5/-.

ACCOMMODATION.

FURNISHED HOUSES.—For the most part the friends gathering at Upwey reside in furnished houses, which have to be taken for a fortnight at least. Those forming a house party generally divide the work and expense amongst themselves, and find this a most economical way of spending the holiday. The cost varies according to the household management and general arrangements, but usually runs somewhere about 30/- per week, for the fortnight. It is necessary for all accommodated in furnished houses to bring their own linen (bed and table) and cutlery, also a good rug.

BOARDING HOUSES.—Arrangements are also made with the local boarding houses at charges from £2/2/- to £3/3/- per week. One or two private boarding houses are also arranged for by the Convention Committee, where the charges are generally 45/- to 50/- per week.

BOYS' AND YOUNG MEN'S CAMP.—A Canvas Camp for boys and young men is being added this year for the first time, on ground recently purchased by the Convention Council in Collier Avenue, immediately facing the Church. Application for beds should be made early, but any having their own camp equipment can be accommodated at the last moment. The charge for use of camp stretcher, meals, etc., will be 25/- per week, or 4/6 per day. In every case the camper must supply his own bedding and cutlery.

DAY VISITORS

to the Convention are most cordially invited. The train service allows for a whole day or a long half-day being spent in fellowship in some of the meetings. Hot water will be provided for those who desire a picnic lunch, or meals at some of the private or boarding houses can be obtained.

UPWEY CONVENTION COUNCIL.

Mr. G. L. Aitken, Rev. S. Beckingham, Mr. Herbert Clarke, Dr. Northcote Deck, Messrs. T. Graham, J. M. Griffiths, A. Kenny, Dr. J. J. Kitchen, Mr. Norman Lumsden, Dr. D. S. MacColl, Rev. C. H. Nash, M.A., Messrs. D. E. Renshaw, W. Rogers, C. A. Sandland, Revs. J. C. Robinson and A. D. Shaw, Mr. Frank Varley.

Chairman for 1926-27 Convention: Dr. D. S. MacCOLL.

Hon. Treasurer: Mr. W. L. WRIGHT.

Hon. Secretary: Mr. H. P. SMITH.

Assistant Secretary: Mr. W. A. ALLEN.



The Convention Cottage showing new store room just added,

to be used as a dining room for the Boy's Camp.

THE TREASURER

invites the prayers and co-operation of the Lord's people in meeting the expenses of the Convention. Address c/o Keswick Book Depot.

APPLICATIONS FOR ACCOMMODATION

and any information desired should be made as early as possible to the Hon. Secretary.

KESWICK TEA AND BOOK ROOMS,

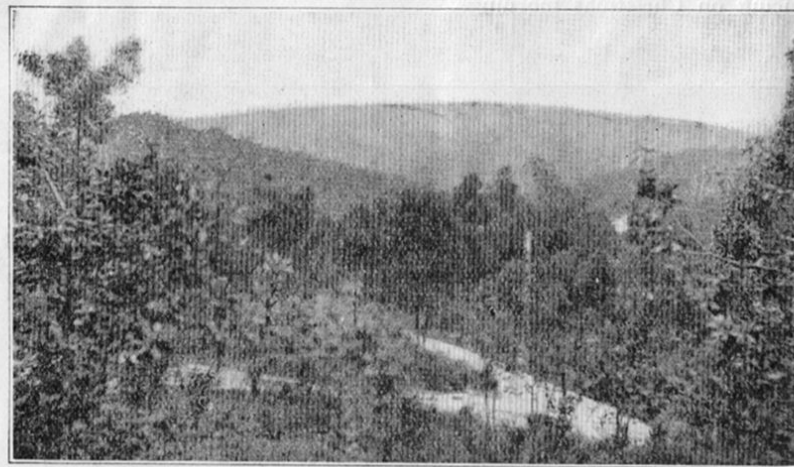
315 Collins Street,

Melbourne.

Alpha Printing Co., 19 Wright's Lane, Melbourne.

UPWEY CONVENTION

CHRISTMAS & NEW YEAR, 1926-1927



Mountain and Bush—Upwey.

The **NINTH ANNUAL UPWEY CONVENTION** will be held at Upwey, from Christmas Eve, December 24th, 1926, till Monday, January 3rd, 1927. The Convention is an Australian "KESWICK," or Victorious Life Convention, and Christians of all denominations, or of no denomination, are cordially invited to spend the holiday season in blessed fellowship over the Word of God.

SITUATION.

UPWEY is situated 24 miles from Melbourne, and is the first station on the narrow gauge line from Upper Ferntree Gully to Gembrook. It is a pretty township, nestling at the foot of the Dandenongs, and has delightful walks, together with opportunities for splendid mountain climbing for the young people.